



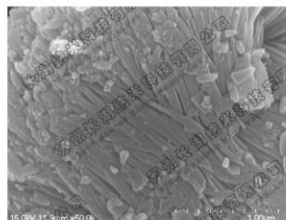
Basic copper sulfate nanosheet

Product introduction

Product description: Tri-basic copper sulfate nanosheet;
Copper sulfate basic nanobelts;
Fixed copper nanoribbon; Nano TBCS;
Nano cupric sulfate basic;
Nano bordeaux mixture composition.

CAS no.: 1344-73-6

Product specification: Thickness 10~30nm



Product explanation

Molecular formula: $\text{CuSO}_4 \cdot 3\text{Cu}(\text{OH})_2 \cdot \text{H}_2\text{O}$

Molecular weight: 470.29

Physic-chemical Properties: Green or light green powder. Insoluble in water and organic solvents, soluble in dilute acid and ammonia, and stable in the air.

Product use: Main composition of bordeaux mixture; needn't smash, can configure directly into bordeaux mixture and bactericidal effect is much better than common bordeaux mixture. Pesticide intermediates, pharmaceutical intermediates, feed additives, wood preservation, supplements of efficient copper.

Packing, storage and shipping: Aluminum foil & carton packaging, 2kg, 10kg, 20kg. Seal packaging. Store in a cool & dry place. Keep dry in transit.

Executive standard: Enterprise standard



Quality standard

Item	Purity (%)	Diameter (nm)	Length (um)	Shape	Specific surface area (m ² /g)	Density (g/cm ³)
Index	99+	10~30	1~2	Nanosheet	10~30	0.1~0.5